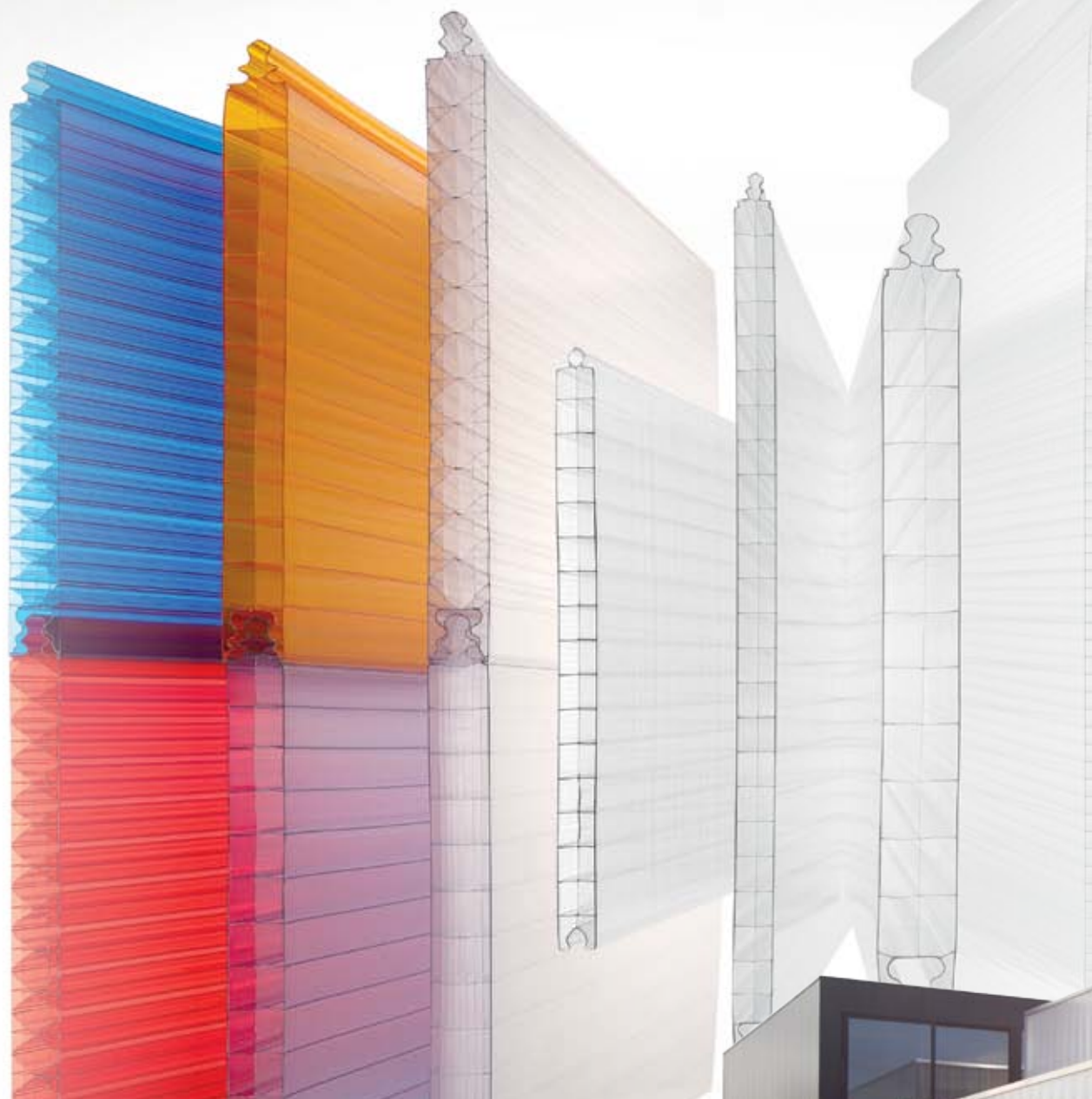


ONE MATERIAL, A THOUSAND IDEAS

CREATIVE SOLUTIONS TO THE
BUILDING & CONSTRUCTION INDUSTRY,
THANKS TO SEPLUX ©
POLYCARBONATE PANELS





Polycarbonate is one of those products able to offer new design perspectives, to give substance to ideas in often unexpected and out-of-the-box ways.

However, not all polycarbonate is the same. Indeed, Seplux panels are made of 100% PC, i.e. without regenerated material. This means higher technical performance than any homologous or non-pure product. Our panels have been successfully applied for years in many facilities and buildings in Italy and abroad.



TODAY'S WORK ENGAGES US
IN THE CONSTANT RESEARCH FOR
CREATIVE AND TANGIBLES SOLUTIONS
TO THE INCREASINGLY COMPLEX
PROBLEMS IN BUILDING DESIGN.

THANKS TO THE USE OF VERSATILE
MATERIALS, THESE INNOVATIVE
SOLUTIONS HELP TO CHANGE THE
URBAN LANDSCAPE, BY REDEFINING
AND TRANSFORMING THE
VERY STANDARDS OF MODERN
ARCHITECTURE.





TECHNOLOGY & DESIGN

Facade of the Alis plant in Castenuovo
Rangone (MO) made of PC Seplux 40
9P transparent panels.
Height about 13m



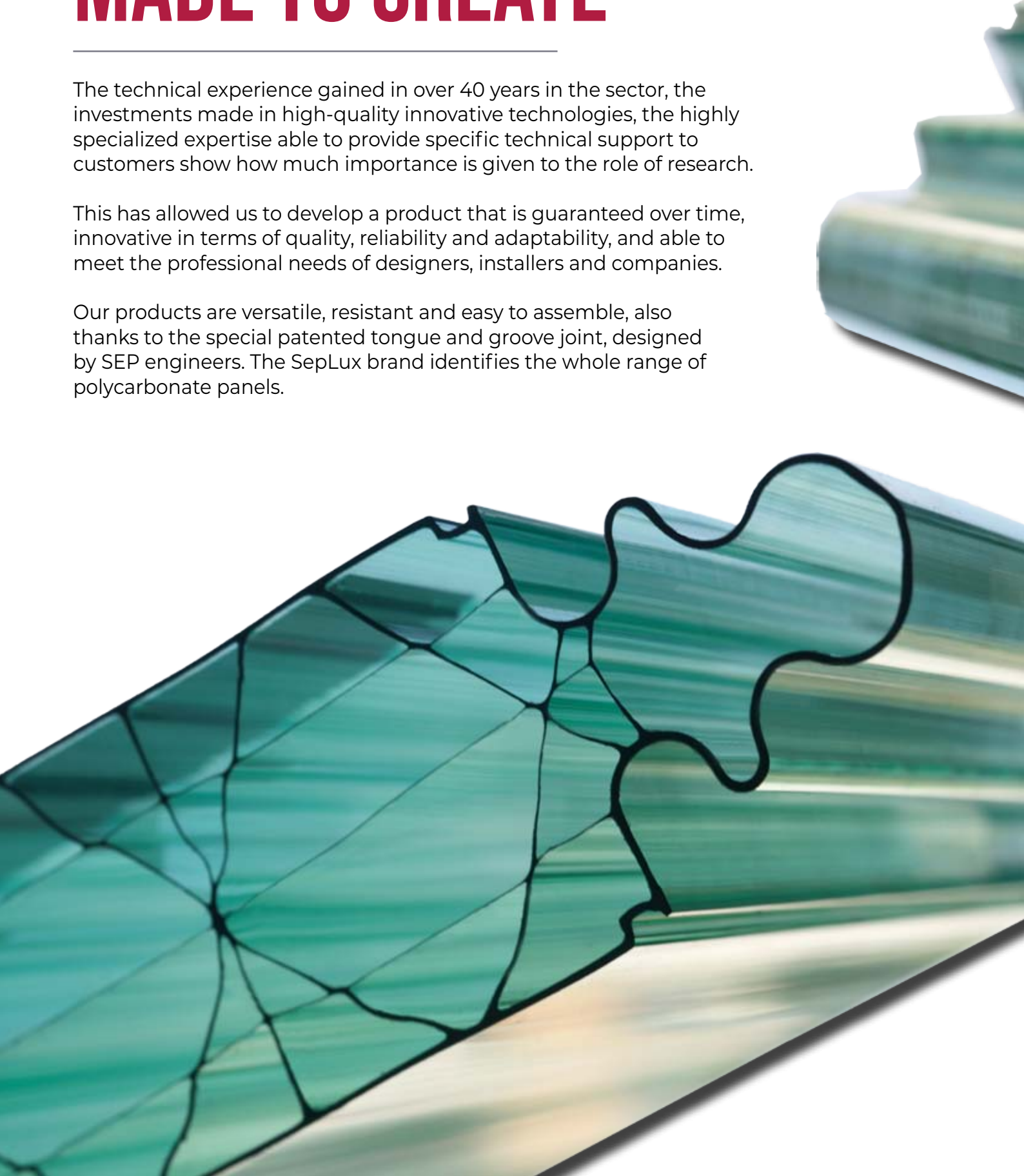


BORN TO LAST MADE TO CREATE

The technical experience gained in over 40 years in the sector, the investments made in high-quality innovative technologies, the highly specialized expertise able to provide specific technical support to customers show how much importance is given to the role of research.

This has allowed us to develop a product that is guaranteed over time, innovative in terms of quality, reliability and adaptability, and able to meet the professional needs of designers, installers and companies.

Our products are versatile, resistant and easy to assemble, also thanks to the special patented tongue and groove joint, designed by SEP engineers. The SepLux brand identifies the whole range of polycarbonate panels.



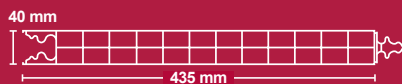


Modular multiwall panel with a tongue-and groove-joint in co-extru-ded polycarbonate (UV-protected on one side) - GUARANTEED 10 YEARS against ageing. The patented male-female interlock joint ensures perfect water-tightness without needing any sealant.

The combined use of Seplux 40 panel together with their special stainless steel hooks ensures suitability to both traditional and bespoke designs in various sizes and architectural styles, without the need to modify or alter the panels avoiding any drilling, cutting or sealing that would compromise their technical characteristics.



The Seplux 40 3P panel with its excellent application quality is ideal for the realization of any industrial or private constructions.



Its 5-wall composition reinforced with X-intersections makes it more resistant and capable of bearing heavy loads.



The 9-wall Seplux 40 9P panel is very resistant and versatile and therefore ideal for any project.



TECHNICAL DATA SEPLUX 40 3P

- **Panel Section :** 40 mm triple-wall
- **Width:** 435 mm
- **Length:** maximum transportable
- **Light Transmission:** 76% transparent - 38% opal - 29% smoke
- **Thermal Insulation:** $U = 1,84 \text{ w/(m}^2 \text{ k)}$ considerably better than double glazing type 4/12/4 K = 2,6 (Kcal/h $\text{m}^2 \text{ }^\circ\text{C}$)
- **Minimum Bending Radius:** 200 times its thickness ($r = 8000 \text{ mm}$)
- **Linear Expansion:** 0,065 mm/m $^\circ\text{C}$
- **Service Temperature:** - 40° + 120° $^\circ\text{C}$
- **Fire Resistance:** European standard B- s1,d0
- **Available colours:** transparent - opal - smoke - blue - green (other colours on request)

TECHNICAL DATA SEPLUX 40 5PX

- **Panel Section :** 40 mm 5-wall
- **Width:** 435 mm
- **Length:** maximum transportable
- **Light Transmission:** 54,4% transparent
- **Thermal Insulation:** $U = 1,20 \text{ w/(m}^2 \text{ k)}$ considerably better than double glazing type 4/12/4 K = 2,6 (Kcal/h $\text{m}^2 \text{ }^\circ\text{C}$)
- **Minimum Bending Radius:** 200 times its thickness ($r = 8000 \text{ mm}$)
- **Linear Expansion:** 0,065 mm/m $^\circ\text{C}$
- **Service Temperature:** - 40° + 120° $^\circ\text{C}$
- **Fire Resistance:** European standard B- s1,d0
- **Load Resistance:** kg. 120 (concentrate load)
- **Available colours:** transparent - opal - smoke - blue - green (other colours on request)

TECHNICAL DATA SEPLUX 40 9P

- **Panel Section :** 40 mm 9-wall
- **Width:** 435 mm
- **Length:** maximum transportable
- **Light Transmission:** 47,5%
- **Thermal Insulation:** $U = 1,0 \text{ W/(m}^2 \text{ k)}$
- **Minimum Bending Radius:** 200 times its thickness ($r = 8000 \text{ mm}$)
- **Linear Expansion:** 0,065 mm/m $^\circ\text{C}$
- **Service Temperature:** - 40° + 120° $^\circ\text{C}$
- **Fire Resistance:** European standard B- s1,d0
- **Load Resistance:** kg. 120 (concentrate load)
- **Available colours:** transparent - opal - smoke - blue - green (other colours on request)



Modular multiwall panel with a tongue-and groove-joint in co-extruded polycarbonate (UV-protected on one side) - GUARANTEED 10 YEARS against ageing.

Thanks to the simplicity of the joint and their coplanarity, the panels can be used in wallings, sheds, strip windows.



TECHNICAL DATA SEPLUX 20 PLUS 6P SEPLUX 25 PLUS 6P

Panel section	20 mm	25 mm
Width	500	500
Length	on request	
Light transmission	58%	55%
Service Temperature	-40° +120°	
Linear expansion	0,065 mm/m °C	
Fire Resistance	B-s1,d0	
Thermal trasmitance "Ug" [W/(m ² • K)]	1.6	1.4

TECHNICAL DATA SEPLUX 20 PLUS

- **Panel Section** : 20 mm triple-wall
- **Width**: 500 mm
- **Length**: maximum transportable
- **Light Transmission**: 78%
- **Thermal Insulation**: $U = 2,2 \text{ w}/(\text{m}^2 \text{ k})$ considerably better than double glazing type $4/12/4 \text{ K} = 2,6 \text{ (Kcal/h m}^2 \text{ °C)}$
- **Minimum Bending Radius**: 200 times its thickness ($r = 4000 \text{ mm}$)
- **Linear Expansion**: $0,065 \text{ mm}/\text{m °C}$
- **Service Temperature**: - 40° + 120° °C
- **Fire Resistance**: European standard B- s1,d0
- **Available colours**: transparent - opal - smoke - blue - green (other colours on request)

TECHNICAL DATA SEPLUX 20 LIGHT

- **Panel Section** : 20 mm triple-wall
- **Width**: 333,3 mm
- **Length**: maximum transportable
- **Light Transmission**: 78%
- **Thermal Insulation**: $U = 2,20 \text{ W}/(\text{m}^2 \text{ K})$ considerably better than double glazing type $4/12/4 \text{ K} = 2,6 \text{ (Kcal/h m}^2 \text{ °C)}$
- **Minimum Bending Radius**: 200 times its thickness ($r = 4000 \text{ mm}$)
- **Linear Expansion**: $0,065 \text{ mm}/\text{m °C}$
- **Service Temperature**: - 40° + 120° °C
- **Fire Resistance**: European standard B- s1,d0
- **Available colours**: transparent - opal - smoke - blue - green (other colours on request)



Modular multiwall panel with a tongue-and-groove-joint in co-extruded polycarbonate (UV-protected on one side) - GUARANTEED 10 YEARS against ageing.

The high resistance performance, ease of installation, the particular tongue-and-groove joint structure,



the perfectly coplanar panels and their assembly without the need for accessories, make this the ideal product for interior false ceilings (canopies), mini-sheds and small roofs.



TECHNICAL DATA SEPLUX 10 E 10/L

- **Panel Section :** 10 mm triple-wall
- **Width:** 750 mm
- **Length:** maximum transportable
- **Light Transmission:** 79%
- **Thermal Insulation:** $U = 2,70 \text{ W}/(\text{m}^2 \text{ K})$
- **Minimum Bending Radius:** 200 times its thickness ($r = 2000 \text{ mm}$)
- **Linear Expansion:** $0,065 \text{ mm}/\text{m } ^\circ\text{C}$
- **Service Temperature:** $-40^\circ + 120^\circ \text{ } ^\circ\text{C}$
- **Fire Resistance:** European standard B- s1,d0
- **Available colours:** transparent - opal - smoke - blue - green (other colours on request)
- **Heat welding of cells:** on request

Coextruded alveolar polycarbonate sheet (protected against UV rays on the outside) with a 10 YEAR WARRANTY against aging. Reinforced on the outside, it has greater resistance to impact and hail. The structural conformation of the internal wall gives the material remarka-



ble acoustic and optical characteristics. Ideal slab for the construction of curved or flat roofs, thanks to the structure it is also suitable for the construction of vertical works.



TECHNICAL DATA SEPLUX 16

- **Section:** 16 mm triple wall double chamber
- **Width:** 333,3 mm
- **Length:** maximum transportable
- **Light Transmission:** 78%
- **Thermal Insulation:** $U = 2,29 \text{ W}/(\text{m}^2 \text{ K})$
- **Minimum Bending Radius:** 200 times its thickness ($r = 3200 \text{ mm}$)
- **Linear Expansion:** $0,065 \text{ mm}/\text{m } ^\circ\text{C}$
- **Service Temperature:** $-40^\circ + 120^\circ \text{ } ^\circ\text{C}$
- **Fire Resistance:** European standard B- s1,d0
- **Available colours:** transparent - opal - smoke - blue - green (other colours on request)

Co-extruded multi wall polycarbonate sheet (UV protected on one side) - GUA-RANTEED 10 YEARS against ageing.

This sheet is reinforced on the outer face and consequently has a greater resistance against impacts and hail.



The structure of the internal face offers remarkable acoustic and optical characteristics. Ideal for bent and flat roofs. Thanks to its structure, the SepLux F10 sheet is also suited for use in vertical structures.



TECHNICAL DATA SEPLUX F10

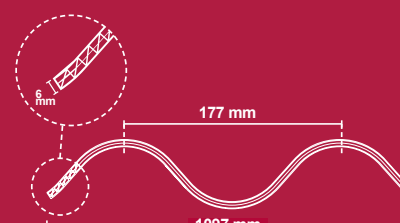
- **Panel Section :** 10 mm triple-wall
- **Width:** 1250 mm
- **Length:** maximum transportable
- **Light Transmission:** 78%
- **Thermal Insulation:** $U = 3 \text{ W}/(\text{m}^2 \text{ K})$
- **Minimum Bending Radius:** 200 times its thickness ($r = 2000 \text{ mm}$)
- **Linear Expansion:** $0,065 \text{ mm}/\text{m } ^\circ\text{C}$
- **Service Temperature:** $-40^\circ + 120^\circ \text{ } ^\circ\text{C}$
- **Fire Resistance:** European standard B- s1,d0
- **Noise reduction:** (as to ISO 140/1995 and ISO 717/1996 standards) $R_w = 23 \text{ dB}$
- **Available colours:** transparent - opal - smoke - blue - green (other colours on request)



Sheet of polycarbonate corrugated walls 4.
Ideal for the construction of flat or curved skylights, also in combination with sandwich panels.

Corrugated sheet in multiwall double-chamber polycarbonate.
Ideal for curved or flat skylights, can also be used with sandwich panels.

Corrugated sheet in multiwall double-chamber polycarbonate.
Ideal for curved or flat skylights.



TECHNICAL DATA SEPLUX GRECA 5G

Panel Section	10 mm	12 mm	16 mm
Greek height	50	52	56
Number walls	4		
Pass	~ 250		
Width plate	1000 ± 5		
Thermal trasmittance (v. t.) W/m ²	Ug = 2,57	Ug = 2,35	Ug = 2,05
Transparent light transmission	68%		
Service Temperature	-40°+120°		
Linear expansion	0,065 mm/m °C		
Fire Resistance	B s1 d0		
Lenght	On request		
Bending radius	3,3 m or 6,0 m		
Available colours	trasparent		
	opal		
	smoke		
	blue		
	green		
	other colours on request		
Heat welding of cells	on request		

TECHNICAL DATA SEPLUX GRECA 7G

- **Panel section:** 10 mm triple-wall corrugation 40mm
- **Width:** 1000 mm 7 greche
- **Length:** maximum transportable
- **Light transmission:** 73%
- **Thermal Insulation:** U = 2,70 W/(m² k)
- **Minimum bending radius:** 200 times its thickness (r = 2000 mm)
- **Linear expansion:** 0,065 mm/m °C
- **Service temperature:** -40° +120° °C
- **Fire Resistance:** European standard B- s1,d0
- **Available colours:** transparent - opal - smoke - blue - green (other colours on request)
- **Pedestrian Load:** as to NF P 33-303-1 standard (with structure designed by our engineering department)
- **Bent:** R 3,3 or R 6,0
- **Heat welding of cells:** on request

TECHNICAL DATA SEPLUX ONDA

- **Panel section:** 6 mm triple-wall N-shaped
- **Panel width:** 1097 mm
- **Working width:** 1050 mm
- **Length:** maximum transportable
- **Wave height:** 51mm
- **Light transmission:** 78%
- **Thermal Insulation:** U = 3,3 W/(m² k)
- **Minimum bending radius:** 200 times its thickness (r = 1200 mm)
- **Linear expansion:** 0,065 mm/m °C
- **Service temperature:** -40° +120° °C
- **Fire Resistance:** European standard B- s1,d0
- **Available colours:** transparent - opal - smoke - blue - green (other colours on request)
- **Heat welding of cells:** on request



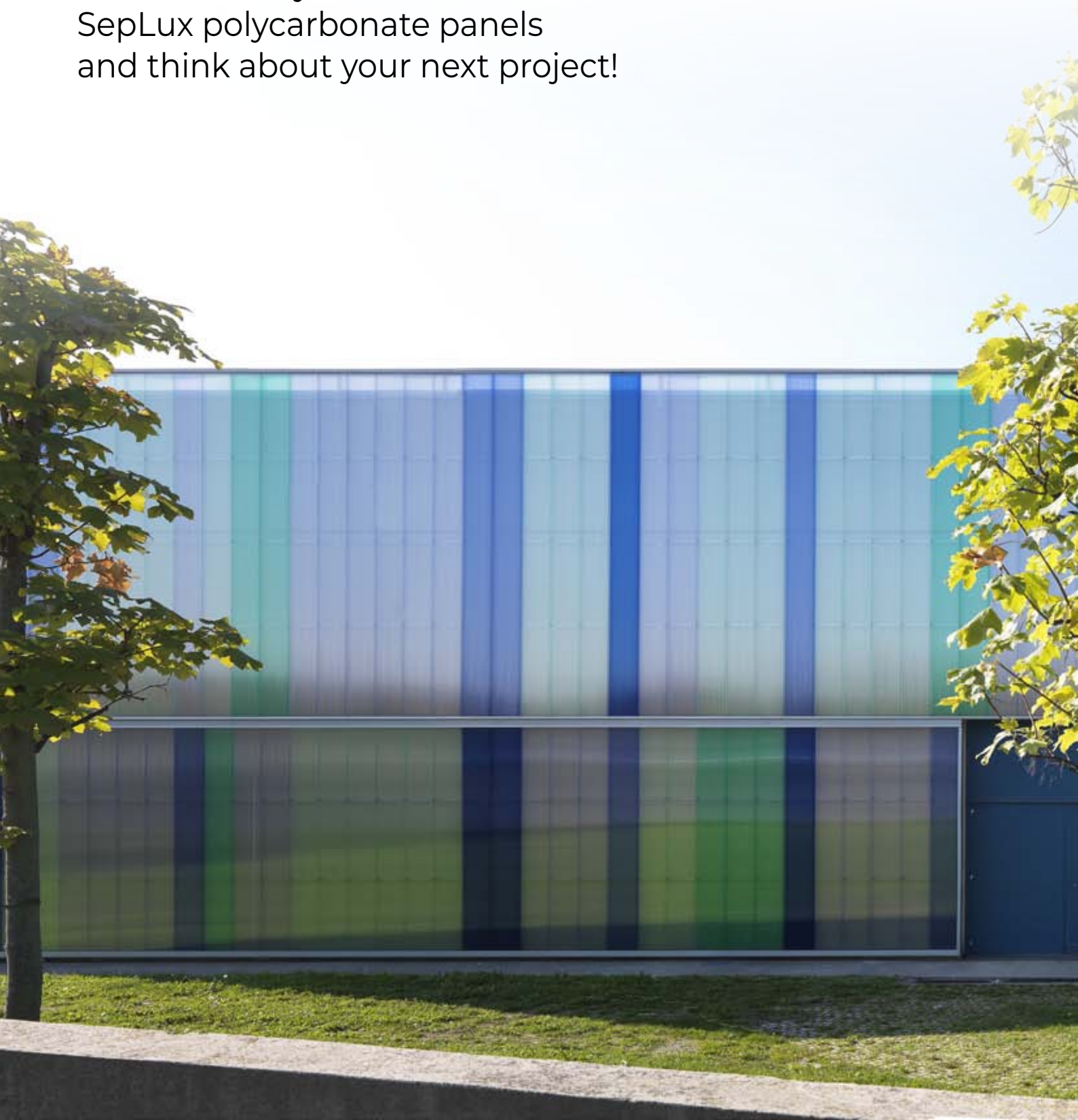


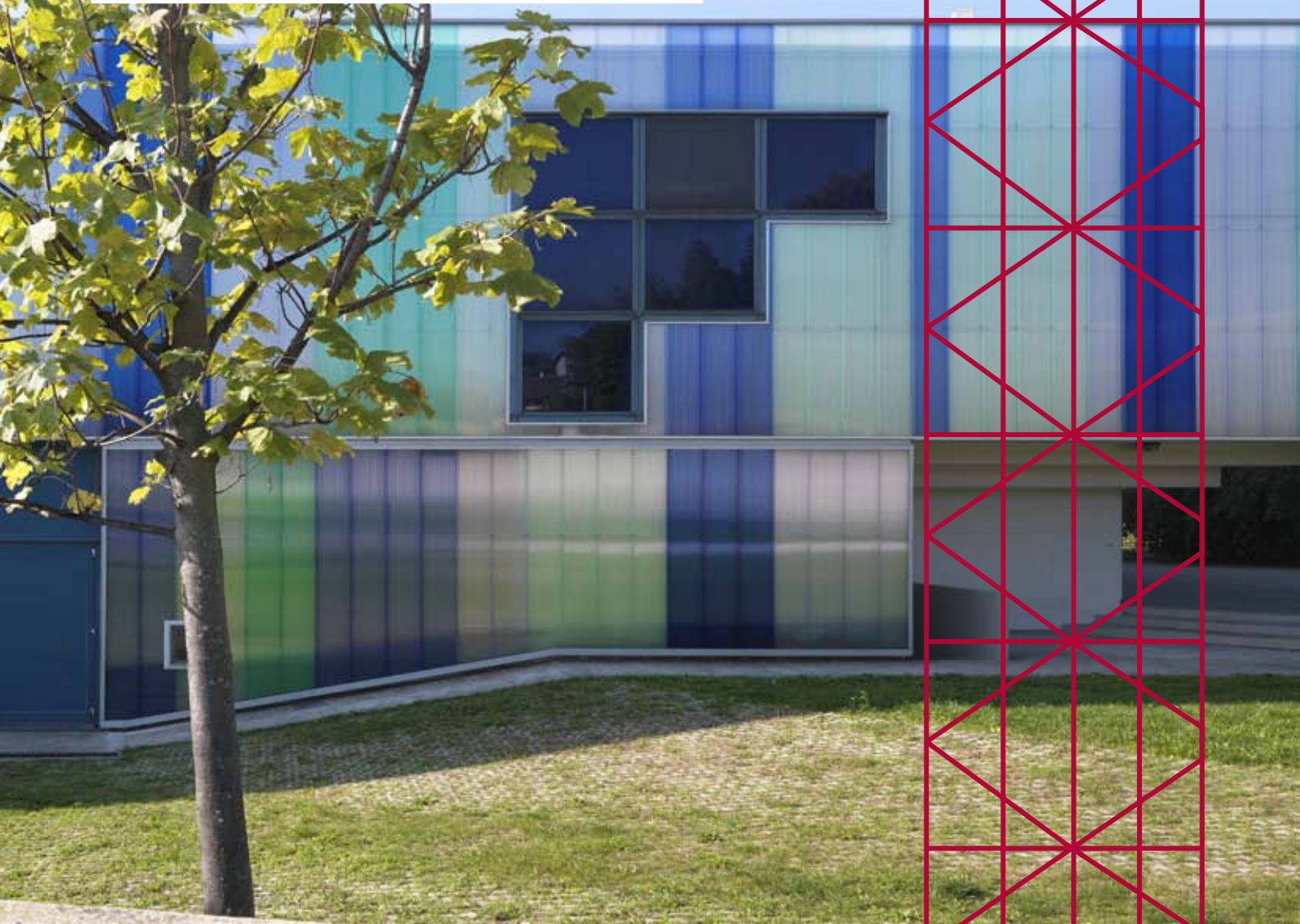
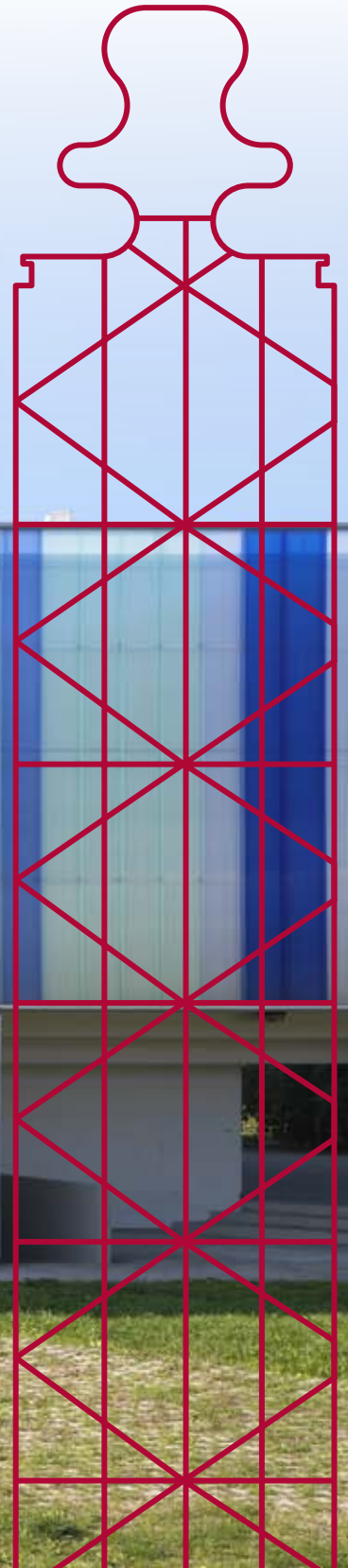
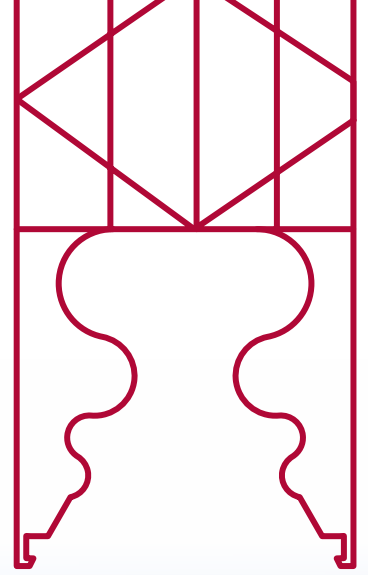
**A PRECIOUS MATERIAL
FOR BRILLIANT IDEAS**



SOME OF OUR PROJECTS

Discover many different uses of our
SepLux polycarbonate panels
and think about your next project!









GARPELL FLAGSHIP STORE - RENOVATION

Giving a second chance to a building is definitely a topical issue. It is important to avoid overbuilding and instead focus on existing buildings, in order to upgrade and give them a new life.

The redevelopment of the existing building for commercial, residential and office use is an important part of “urban regeneration”, as it represents an opportunity to deal with the typical problems of settlements in need of redevelopment.

The idea is that of regenerating the facades of the existing buildings, in line with the architectural design of the new buildings, in order to obtain a brand new piece of well-balanced urban quality, able to reverberate and promote the redevelopment (regeneration) of the surrounding neighbourhood, and create a sequence of covered and open-air pedestrian green areas, (which can also have an environmental function) connecting the main street of the town with the nearby densely populated neighbourhood.

A ground level arcade has therefore been created, with a facade above over the existing building, resting on two points only, so as to leave as much free space as possible for the people who will use it.

From a structural viewpoint, the “suspended” facade requires the replacement of all the ground floor shop windows with a “ribbon” of windows along the whole building, allowing for the inclusion of an iron structure between one window frame and the other. The facade is made in polycarbonate, a transparent and lightweight material, supported by a galvanized steel frame along the north and west sides.

This galvanized steel frame also contributes to the energy upgrading of the building. It is a strong element from the architectural viewpoint, and at the same time, it protects the facades and the interiors from direct sunlight, thus avoiding summertime overheating.

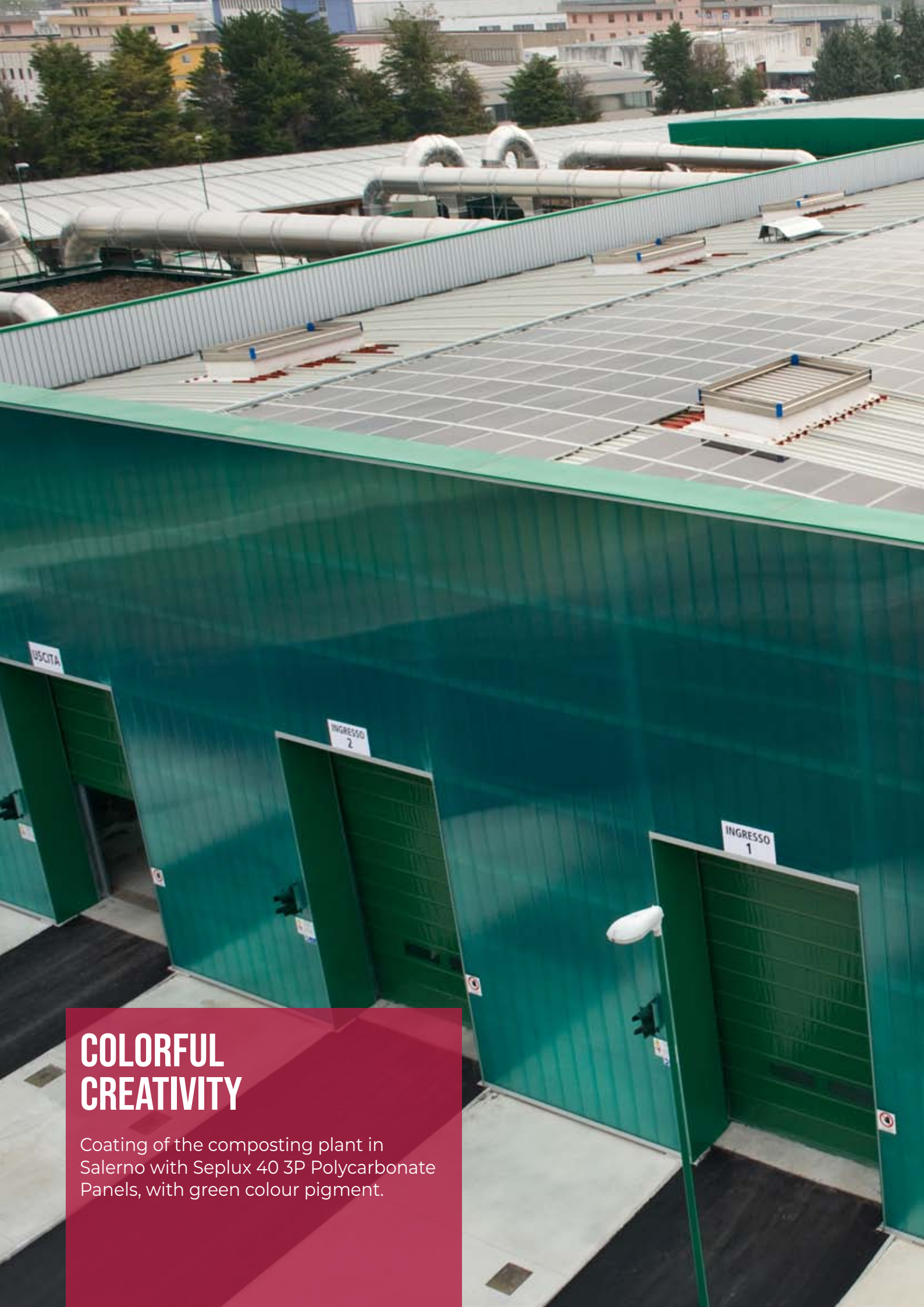




SUSTAINABILITY AND ARCHITECTURE

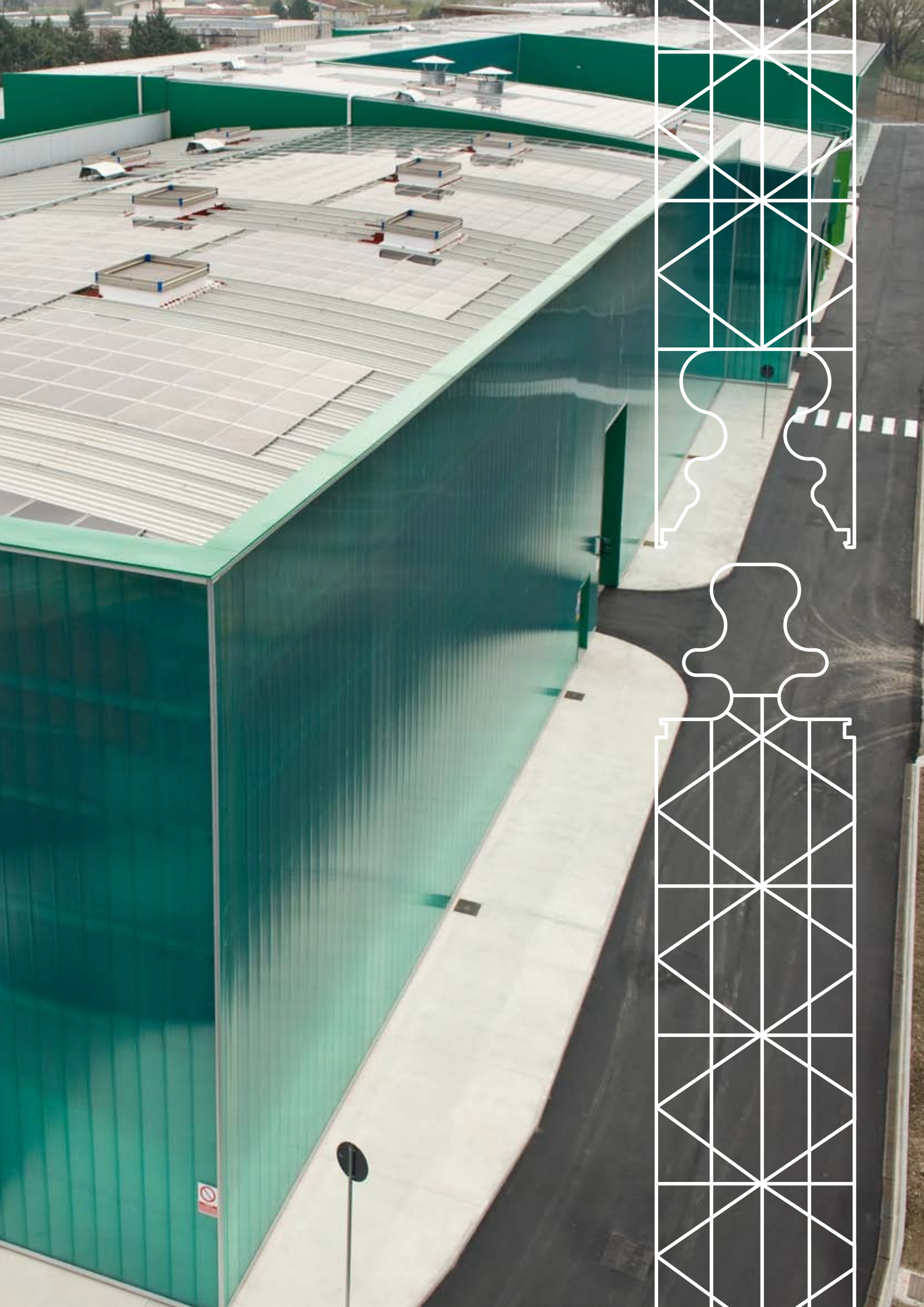
Coating of the headquarters of the Levico Acque Bottling Plant – Levico Terme (TN) with SEP polycarbonate panels and led lighting system, which creates a unique effect at night.





COLORFUL CREATIVITY

Coating of the composting plant in Salerno with Seplux 40 3P Polycarbonate Panels, with green colour pigment.







SEPLUX
PANNELLI IN
POLICARBONATO
POLYCARBONATE PANELS
www.sepitalia.com

Rev 1/2021 - ENG - MOSCHINI ADVCOM



S.E.P. Società Europea Plastica Srl
Via Salenghi, 68 1/2 - 38060 Volano (TN) - Italia
Tel. 0464 410655 - Fax 0464 411332
info@sepitalia.com - www.sepitalia.com



MASSIMA
TRASPARENZA



TENUTA
ALL'ACQUA

